

Description

The VR2 mounts in a standard US electrical box and can be covered with a Decora plate. It contains a linear taper potentiometer with a single Euroblock screw terminal for each of the pot's three conductors, the Vr terminal, the Vc wiper terminal, and the ground terminal.

Connection

Turn the power to the unit off until all connections are made. Connect the VR2's control voltage Vc (wiper) connection(s) first. Then connect the voltage reference - "Vr" on the VR2 ("REF" terminal on a RPM unit). Connect the GND (ground) terminal last. Double and triple check your wiring before applying power to the MA 4 or RPM since improper wiring can and will cause permanent, irreparable damage to the VR2, requiring replacement of the remote. Such damage is not covered by Rane's warranty; checking the wiring is easier than a second trip to the job site with another remote.

Euroblocks

Be sure to note the wire color of each input in order to facilitate correct wiring to the controlled unit. If the ground or shield wire is left shorter, it acts as a strain relief for the other wires. Connect each wire to the 3-pin connector by fully inserting it in the correct socket and tightening the screw. Make sure wires are free of nicks and that the cable jacket is stripped back sufficiently to allow it to lie in the electrical box with the remote assembly inserted.

Voltages

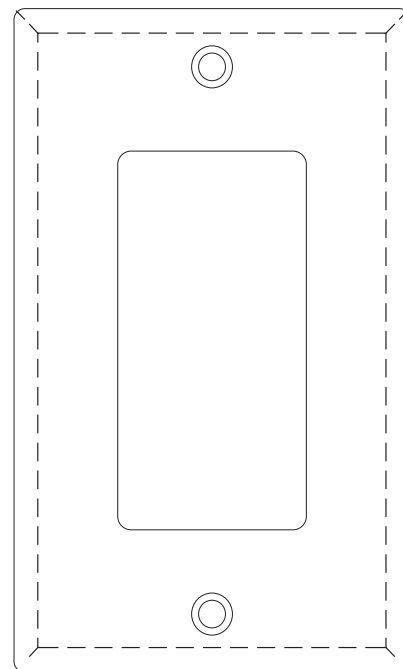
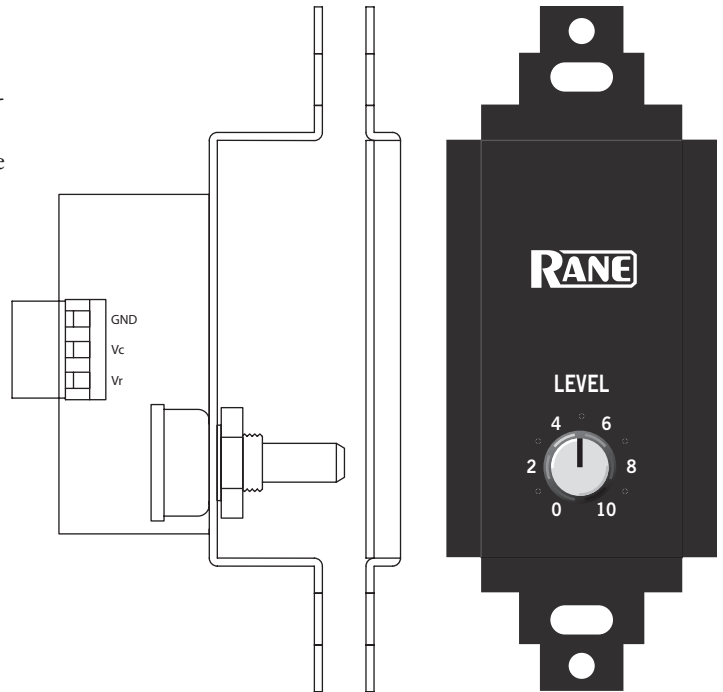
Turn the power to the unit off until all connections are made. It is important to ensure that the Remote Ports are not subjected to sustained voltages outside the range of 0 to 5 volts DC or high levels of static. Inputs are protected, however, caution is the better part of... you know. It is a good idea to install the wiring, connect it to the Remote and then make the final connections at the Remote Port.

Do not short the Vref pin to ground. This pin is current limited, however, excess heat is generated in the 5 volt supply if a short occurs. Never subject the Vr pin to voltages above 5 volts.

Remote Mounting

The VR2 remote assembly mounts in a standard U.S. electrical box with a minimum depth of 2.25" (5.5 cm). Use the flat head #6 screws supplied with the kit to mount the remote assembly and silk-screened front panel to the electrical box.

Install the knob so that the line on the knob is properly aligned with the silk-screening on the front panel of the remote. Install any Decora plate of your choice. For a secured installation, you may wish to leave the knobs off and use a blank Decora plate to cover the remote after adjustment.



Decora plate cover, not supplied.

Wire Types

Variations in wire type do not greatly affect the performance of the remote controls. However, a minimum gauge of 22 strand-ed wire with a flexible jacket is recommended. You may use 3-conductor unshielded remote control signal cable for shorter runs (less than 200 ft.) or 2-conductor (1 pair) shielded remote control signal cable (use the shield as the GND return) for longer runs (200 to 1000 ft.). The type of wire required is influenced by your installation and local electrical codes.

Rane Corporation does *not* provide or source cable. Please contact your local retail or wholesale outlet, *not* the factory. The following is a short list of suitable cable types:

CONSOLIDATED ELECTRONIC WIRE AND CABLE

Plenum cable:

Unshielded remote control signal cable CAT. # 9896

Shielded remote control signal cable CAT. #9877, CAT. #9852

WEICO WIRE & CABLE INC.

Communication and control cable:

Multiconductor, unshielded CAT. #7606

ALPHA

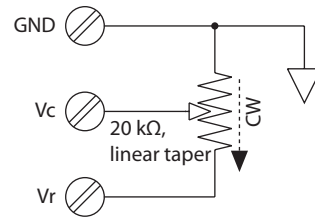
Communication and control cable:

Multiconductor, unshielded CAT. #1175C

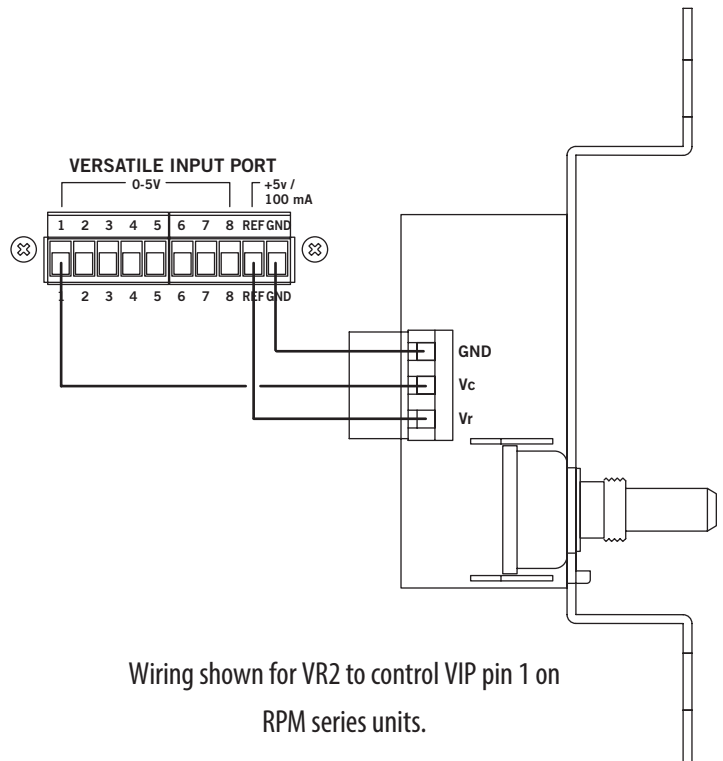
BELDEN

Unshielded remote control signal cable CAT. # 88741

Shielded remote control signal cable CAT. # 88723



VR2 All-in-One Block Diagram and Schematic



Wiring shown for VR2 to control VIP pin 1 on RPM series units.

Versatile Input Port

- REF
- GND
- VIP pin 1...8

Silkscreen text on VR2

- Vr
- GND
- Vc



WARNING: This product may contain chemicals known to the State of California to cause cancer, or birth defects or other reproductive harm.

©Rane Corporation 10802 47th Ave. W., Mukilteo WA 98275-5000 TEL 425-355-6000 FAX 425-347-7757 WEB rane.com

All features & specifications subject to change without notice. PN 12907